

**60**  
PARTNERS



**15**  
PARTNERS



**1**  
PARTNER



**2**  
PARTNERS



**130**  
PARTNERS



**40**  
PARTNERS



**30**  
PARTNERS



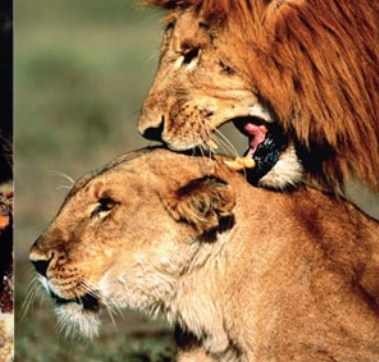
**25**  
PARTNERS



**9**  
PARTNERS



**72**  
PARTNERS



**4800?**  
PARTNERS



FIND OUT THE TRUTH.

# GENE SIMMONS' FAMILY JEWELS

NEW SEASON PREMIERES TONIGHT 10/9C

Gene Simmons has had 4,800 partners (or so he says). Find out the truth. Watch as Gene is strapped to a lie-detector when A&E brings you an all-new season of **GENE SIMMONS' FAMILY JEWELS**, Tonight, (3/11) at 10/9C.

DJs: Ask your listeners – How many partners have YOU had?



aetv.com